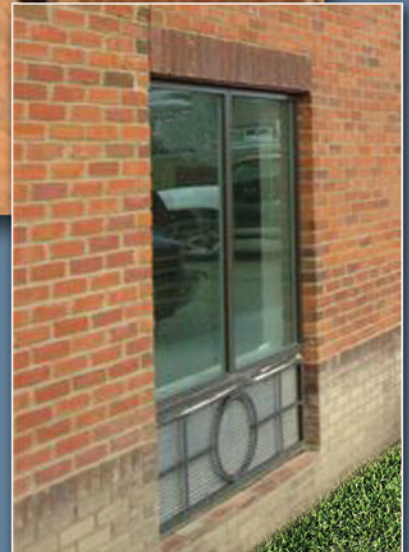


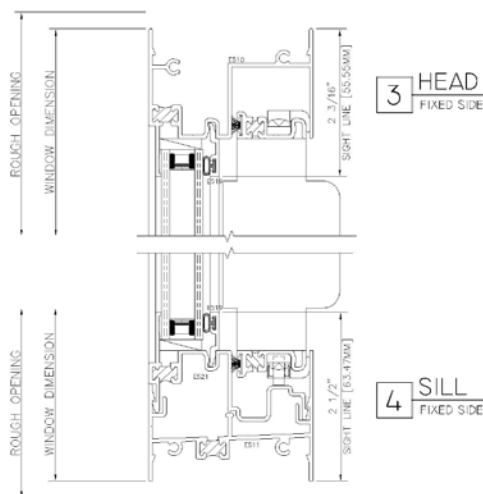
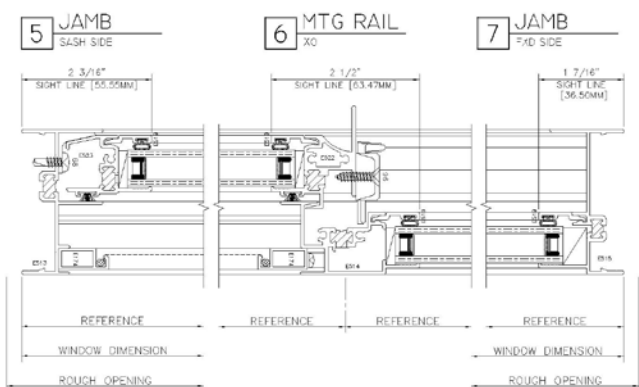
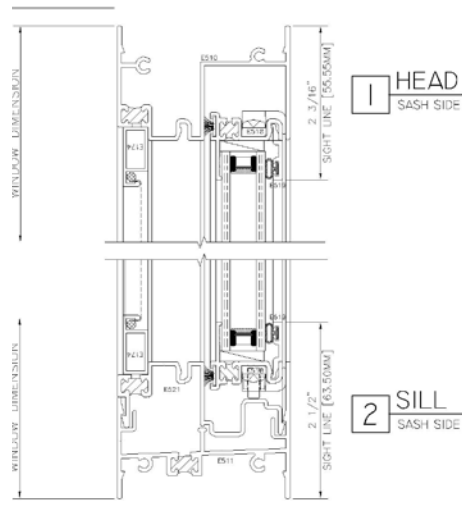
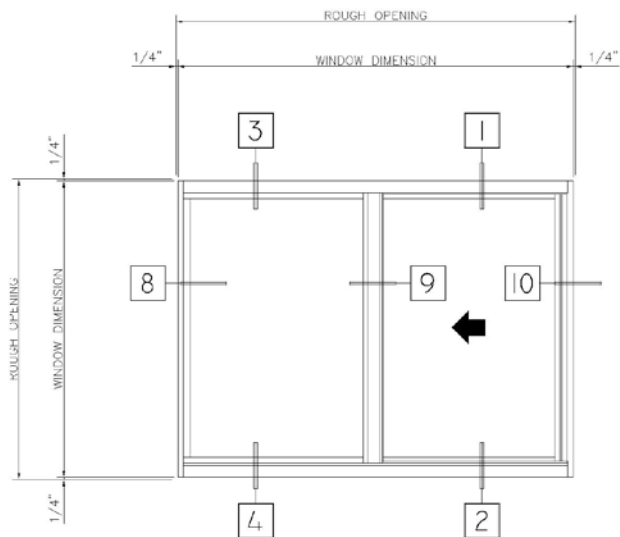
WINTECH

AN EMPLOYEE OWNED COMPANY

S250 Aluminum Sliding Window



WinTech's S250 aluminum sliding window is a 2 1/2" thermally broken frame depth system. Offered in slide options of OX, XO, XOX and OXO (X=operable and O=fixed) the S250 is AAMA tested with ratings of LC 40. With multiple glazing and finish options, the S250 is perfect for many architectural needs including, hospitality, health care, educational or office spaces. When you need a great performing window, and must stay in your budget, look no further. ***The S250 Is the Answer!***



Glazing Options

- Maximum Glazing of 1"
- Multiple Glazing Option (including 1/8", 3/16" and 1/4")
- Single Glazing Option
- Panels
- Louvers

Finish Options

- Clear and Dark Bronze Anodized
- Bronze and White AAMA 2603 Baked Enamel Paint
- 12 Standard Colors of AAMA 2604 Powder Coat Paint
- 12 Standard Colors of AAMA 2604 50% Kynar Paint
- 12 Standard Colors of AAMA 2605 70% Kynar Paint

**** WinTech has the capability to match all colors ****

Structural Test

| Product Type | Test Date | Product Designation | Test Size | Design Pressure | Structural Test Pressure | Air Infiltration | Water Resistance Test Pressure |
|--------------|-----------|---------------------|-----------|-----------------|--------------------------|------------------|--------------------------------|
| Slider | AAMA 08 | LC 40 | 71 x 60 | 40 psf | 60 psf | 0.06 | 6.0 psf |

